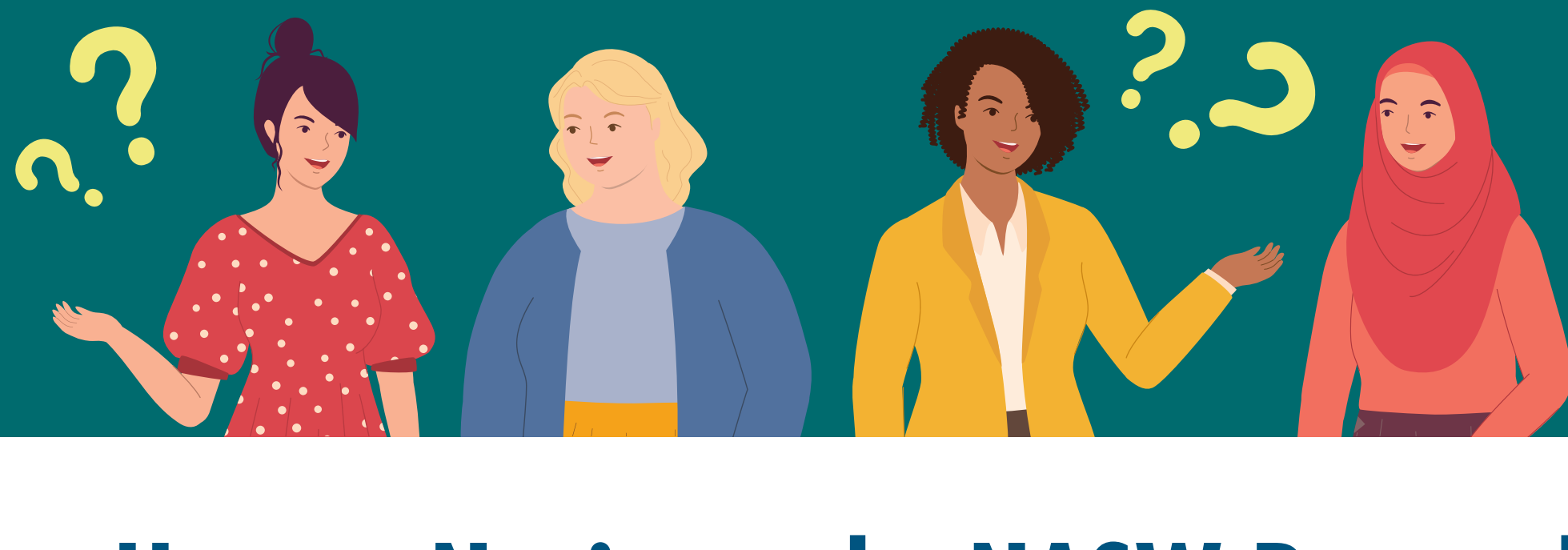


# WHICH DATABASE DO I USE?



## How to Navigate the NASW Research Library for Specific Purposes

The NASW Research Library gives members free unlimited access to more than 25 international databases with thousands of documents from leading research institutions, think tanks and advocacy groups.

[socialworkers.org/Practice/NASW-Research-Library](https://socialworkers.org/Practice/NASW-Research-Library)

### I WANT TO...

Find data for academic papers or broad research projects at work

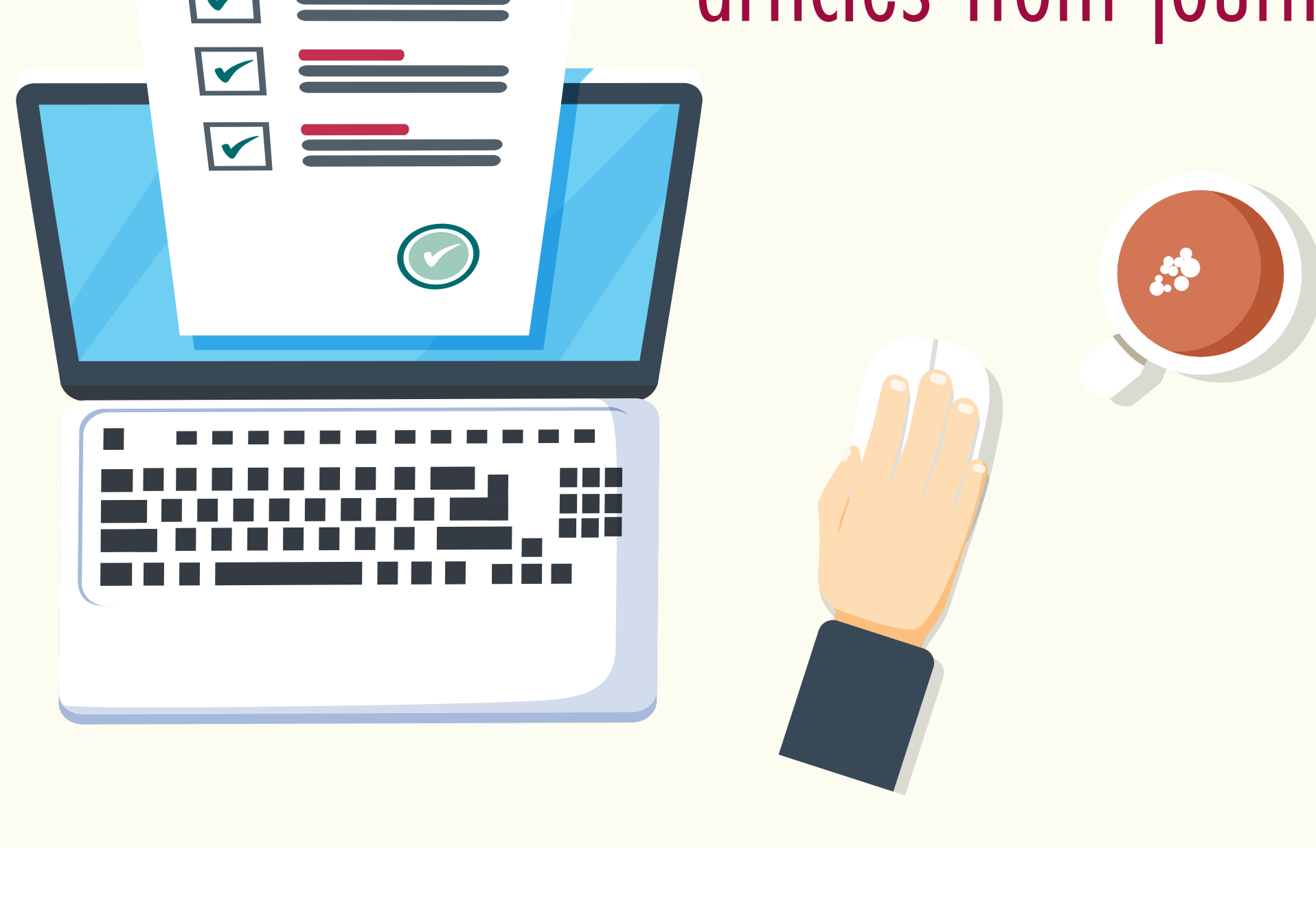
### USE...



**EBSCO Discovery Service**

### TO GET...

An easy-to-use keyword search of thousands of peer-reviewed articles from journals



### I WANT TO...

Stay up-to-date on trending topics in my practice or access tools for practice



### USE...

**Social Work Reference Center**



### TO GET...

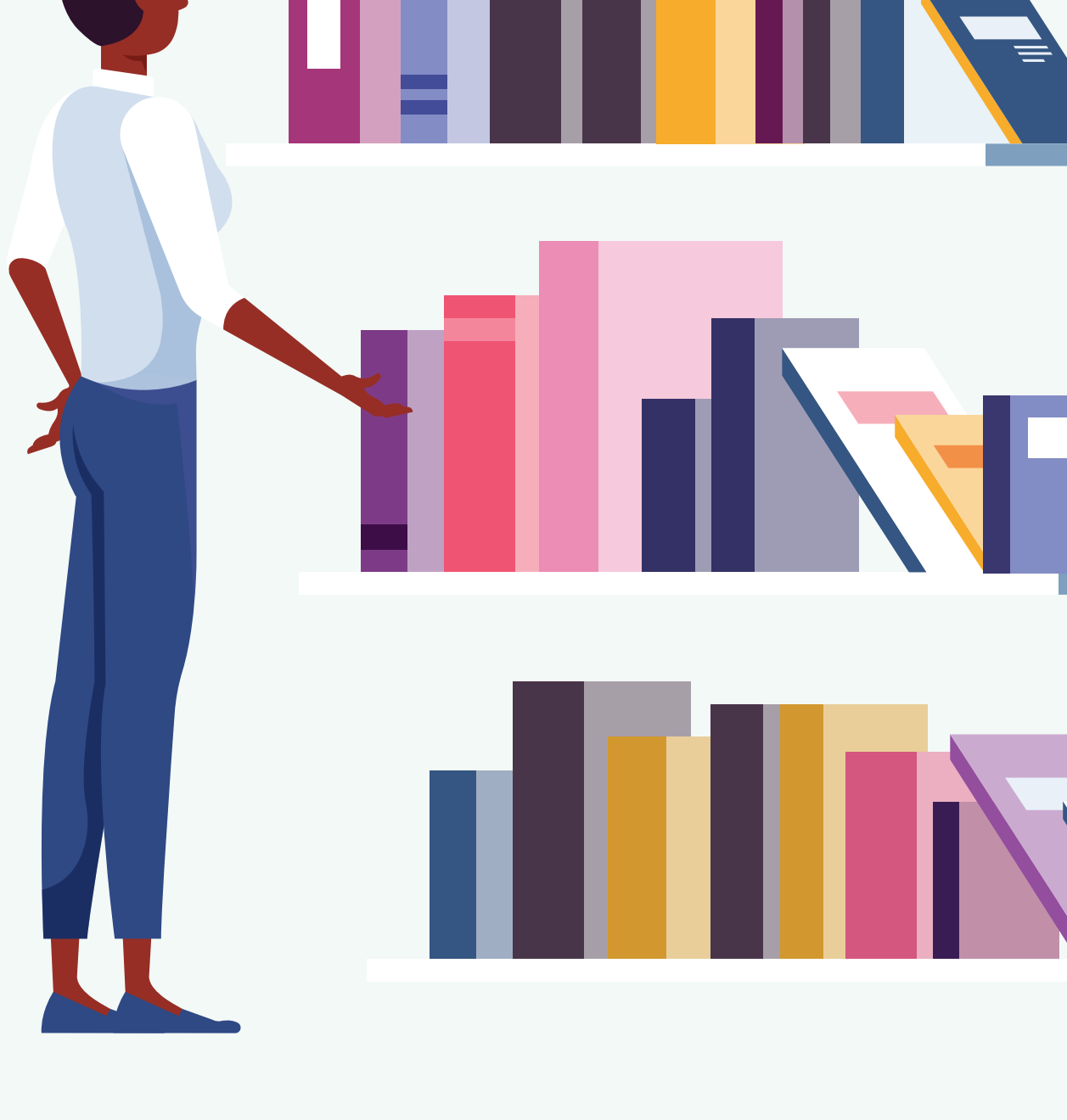
**Tools For Practice By Topic:**

- Clinical Assessment Tool
- Evidence-based Care Sheets
- Guidelines
- Patient Education
- Quick Lessons
- Skills Competency Assessments

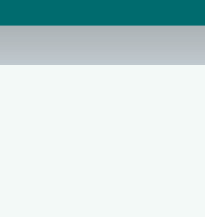


### I WANT TO...

Read a specific journal or learn what journals exist in my field



### USE...



**Publication Finder**

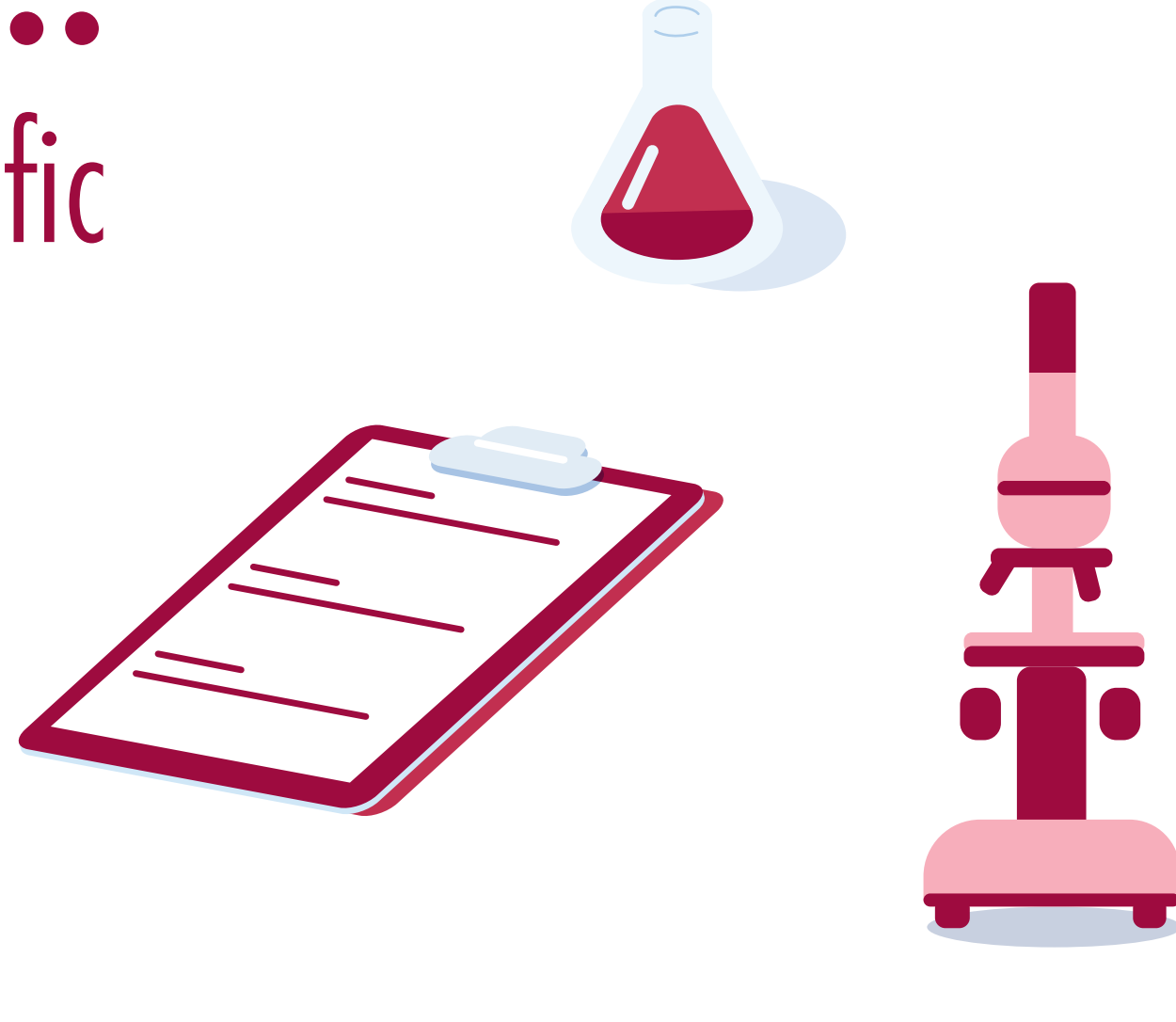
### TO GET...

A keyword search of publication titles and chance to browse by discipline



### I WANT TO...

Find data specific to medical and scientific fields



### USE...

**EBSCO Research Databases**



### TO GET...

A keyword search of the SocINDEX with Full Text, Psychology & Behavioral Sciences Collection and MEDLINE databases

