

# THINKING ABOUT A CAREER IN SOCIAL WORK?



**Social work is the helping profession.**

Relieve People's Suffering  
Fight for Social Justice

Improve Lives and Communities



## PROFESSIONAL OUTLOOK

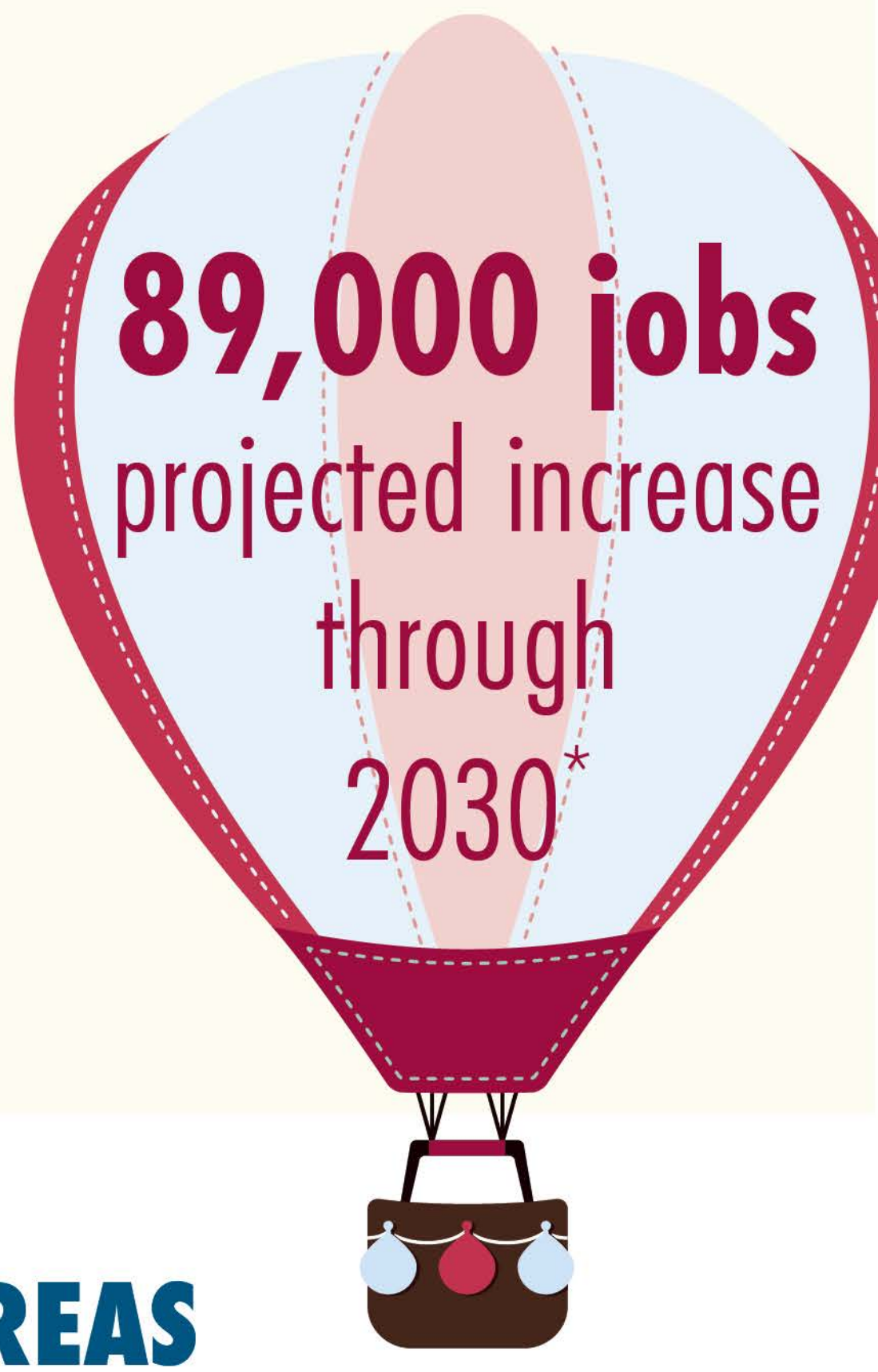


**715,000** social workers in the U.S.

On average, in 2021 social workers earned **\$24+** per hour or **\$50,390** per year\*



**89,000 jobs** projected increase through 2030\*



## 8 KEY PRACTICE AREAS

Social workers offer essential services in a variety of settings. Choose your area of interest.



## 3 EDUCATIONAL DEGREE OPTIONS

Choose your level of education based on your career goals. Be sure to enroll in a social work program accredited by the Council on Social Work Education (CSWE).



### Bachelor's in Social Work (BSW)

Required for entry-level non-clinical positions  
Includes supervised fieldwork or internship



### Master's in Social Work (MSW)

Typically required for clinical positions  
1-2 years to complete

Includes supervised practicum or internship

### Doctorate in Social Work (DSW)

Often required for teaching at university level, high-level programs and systems management positions

Includes advanced training in research, supervision and policy analysis

### State Licenses

Required for clinical positions (and non-clinical positions in some states)

Need MSW and hours of supervised clinical work post-graduation

Must pass licensure exam



## NASW CAREER RESOURCES

Take advantage of NASW's support throughout your career.

- Continuing Education
- Advanced Credentials
- Career Center – Job Listings
- Specialty Practice Sections
- Networking and Events
- Discounted Student Memberships



Learn more about the social work profession.  
[socialworkers.org/Careers](https://socialworkers.org/Careers)